

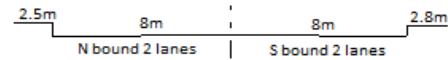
YEAR 2023

COVERAGE (B) STATION 6223

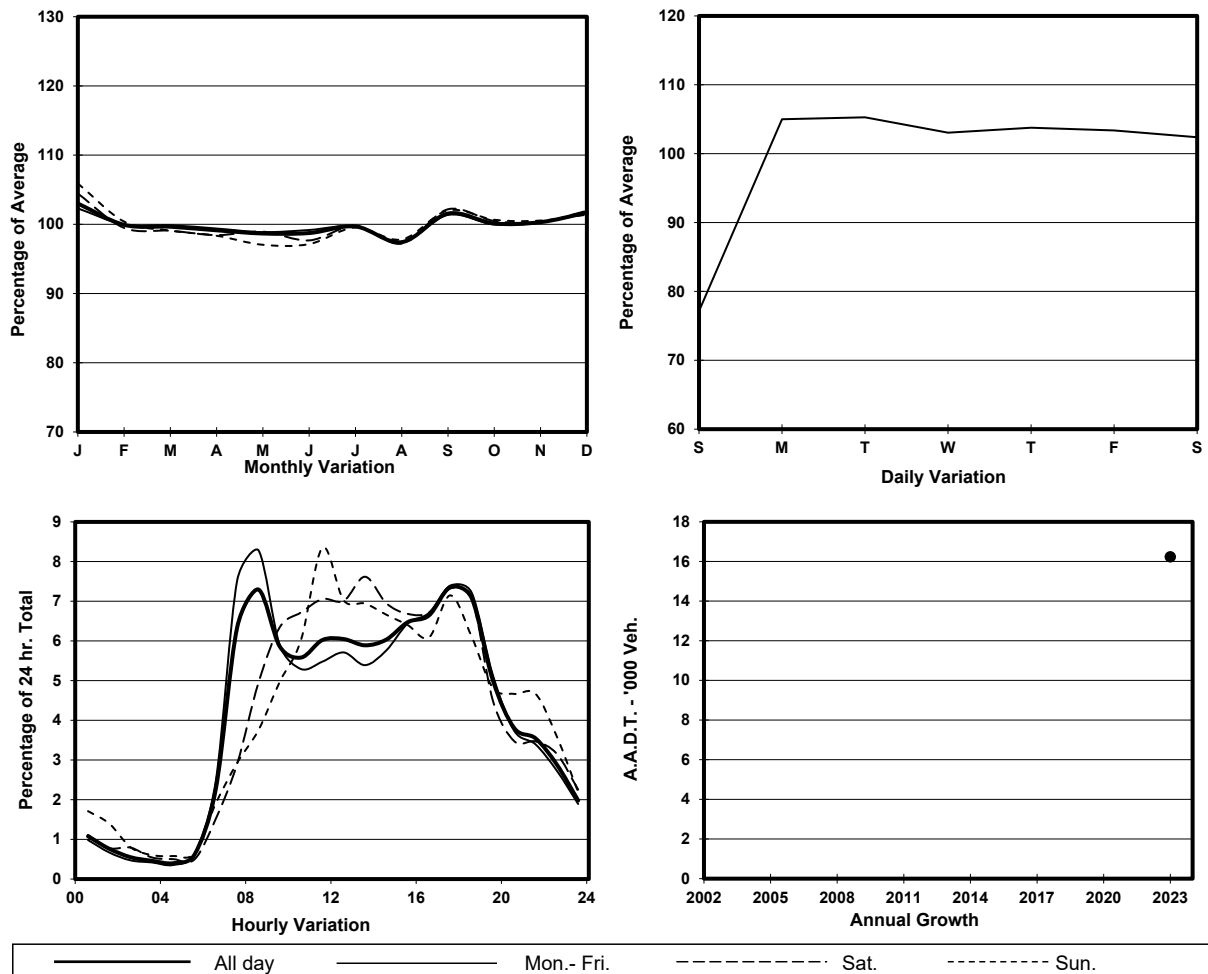
ROAD NETWORK MAJOR

ROAD TYPE LOCAL DISTRIBUTOR

LINK HANG HAU RD (from PO NING RD to CLEAR WATER BAY RD)



### 1. TRAFFIC FLOW VARIATION AND GROWTH



### 2. TRAFFIC CHARACTERISTICS (BY DIRECTION)

Parameter	All - Day	Mon. - Fri.	Sat.	Sun.
<b>SOUTH BOUND</b>				
A.A.D.T.	9920	10480	10280	7690
R 12 / 24 - %	79.1	79.6	79.6	75.3
R 16 / 24 - %	92.6	92.7	92.8	91.4
AM Peak Hour	0800-0900	0700-0800	0900-1000	0900-1000
One-way flow at AM peak hour	780	960	680	390
T - % (AM)	-	6.5	-	-
PM Peak Hour	1700-1800	1700-1800	1700-1800	1700-1800
One-way flow at PM peak hour	730	760	800	540
T - % (PM)	-	7.9	-	-
Prop.of commercial vehicles - 16 hr.	-	6.2	-	-
<b>NORTH BOUND</b>				
A.A.D.T.	6310	6630	6570	5010
R 12 / 24 - %	72.8	73.2	74	67.9
R 16 / 24 - %	90.7	91.1	90.7	88.2
AM Peak Hour	0800-0900	0800-0900	0900-1000	0900-1000
One-way flow at AM peak hour	400	470	390	240
T - % (AM)	-	5.5	-	-
PM Peak Hour	1700-1800	1700-1800	1800-1900	1700-1800
One-way flow at PM peak hour	470	500	480	370
T - % (PM)	-	7	-	-
Prop.of commercial vehicles - 16 hr.	-	9.2	-	-

### 3. OTHER INFORMATION AND COMMENT

**4. Vehicle classification and occupancy - Monday to Friday**

Time		Class of vehicle									
		Motor Cycle	Private Car	Taxi	Private LB	PLB	Goods veh.		Non Fr. Bus	Fr. Bus	
							Light	M & H		SD	DD
0700-0800	Pro	2.5	61.5	5.5	5.0	12.6	5.0	2.0	4.0	0.0	1.6
	Ocp	1.2	1.8	1.7	5.6	14.5	1.9	1.3	16.8	0.0	53.2
0800-0900 Peak hour	Pro	2.7	72.2	5.4	0.7	9.4	4.4	1.3	2.7	0.0	1.3
	Ocp	1.1	1.6	1.6	2.5	14.5	2.1	1.0	13.6	0.0	46.7
0900-1000	Pro	2.8	53.0	9.9	0.0	12.8	11.4	4.3	3.8	0.0	2.0
	Ocp	1.0	1.4	1.4	0.0	11.6	1.2	1.0	13.4	0.0	22.9
1000-1100	Pro	3.5	53.3	8.3	0.7	11.8	13.8	4.2	2.1	0.0	2.4
	Ocp	1.2	1.4	1.8	1.0	9.8	1.8	1.0	11.3	0.0	25.9
1100-1200	Pro	2.1	51.0	10.3	0.0	15.2	13.8	4.1	1.4	0.0	2.1
	Ocp	1.0	1.6	1.9	0.0	11.1	1.7	1.2	2.5	0.0	20.7
1200-1300	Pro	3.1	55.0	8.1	0.6	17.5	5.0	7.5	1.3	0.0	1.9
	Ocp	1.0	1.6	1.5	2.0	9.8	1.8	1.3	2.0	0.0	22.8
1300-1400	Pro	4.8	50.9	8.3	0.7	13.1	11.7	6.9	1.4	0.0	2.2
	Ocp	1.0	1.6	1.6	1.0	10.9	1.6	1.1	1.5	0.0	24.8
1400-1500	Pro	1.1	49.5	13.5	2.3	11.3	14.1	6.2	0.6	0.0	1.5
	Ocp	1.0	1.4	2.2	1.0	14.3	1.6	1.4	30.0	0.0	33.9
1500-1600	Pro	2.4	59.0	8.5	2.4	15.2	4.3	3.6	2.4	0.0	2.1
	Ocp	1.0	1.5	2.4	7.8	14.0	1.9	1.2	17.5	0.0	37.9
1600-1700	Pro	4.5	59.0	4.5	3.5	11.6	6.1	4.0	4.5	0.0	2.1
	Ocp	1.0	1.8	2.7	4.7	16.6	1.6	1.1	3.8	0.0	58.8
1700-1800	Pro	8.4	47.5	11.4	0.6	13.8	10.8	4.2	0.6	0.0	2.6
	Ocp	1.1	1.7	1.9	2.0	14.6	1.7	1.3	14.0	0.0	55.8
1800-1900	Pro	5.5	67.3	6.6	0.4	10.6	5.1	1.5	1.8	0.0	1.2
	Ocp	1.2	1.5	2.2	3.0	16.1	1.2	1.0	14.0	0.0	67.4
1900-2000	Pro	2.7	66.3	7.4	0.0	13.4	5.4	1.3	1.3	0.0	2.2
	Ocp	1.0	1.4	1.3	0.0	16.2	1.4	1.0	3.0	0.0	32.0
2000-2100	Pro	4.1	71.0	7.2	1.0	11.3	1.0	1.0	1.0	0.0	2.3
	Ocp	1.0	1.3	1.3	2.0	13.8	2.0	1.0	2.0	0.0	28.1
2100-2200	Pro	3.8	51.9	15.2	1.3	19.0	3.8	0.0	1.3	0.0	3.8
	Ocp	1.0	1.4	2.3	3.0	11.7	1.3	0.0	1.0	0.0	25.4
2200-2300	Pro	2.8	59.6	9.9	0.0	22.7	0.0	1.4	0.0	0.0	3.5
	Ocp	1.0	1.5	1.7	0.0	12.4	0.0	1.0	0.0	0.0	46.7
16 hours	Pro	3.6	58.9	8.3	1.3	13.0	7.5	3.4	2.1	0.0	2.0
	Ocp	1.1	1.5	1.9	4.2	13.3	1.6	1.2	10.9	0.0	38.5

**Legend: Pro.** Proportion of vehicles in % (Sum may not add up to 100% due to figure rounding)\*

**Ocp.** Average occupancy of vehicles including both driver and passengers\*

**M&H** Medium and Heavy

\* All traffic data are collected from combined bounds